



MONTHLY MEMBERSHIP PROGRESS REPORT

District 25 A

Results as of: 05/31/2018

GMT: STEVE ANTON

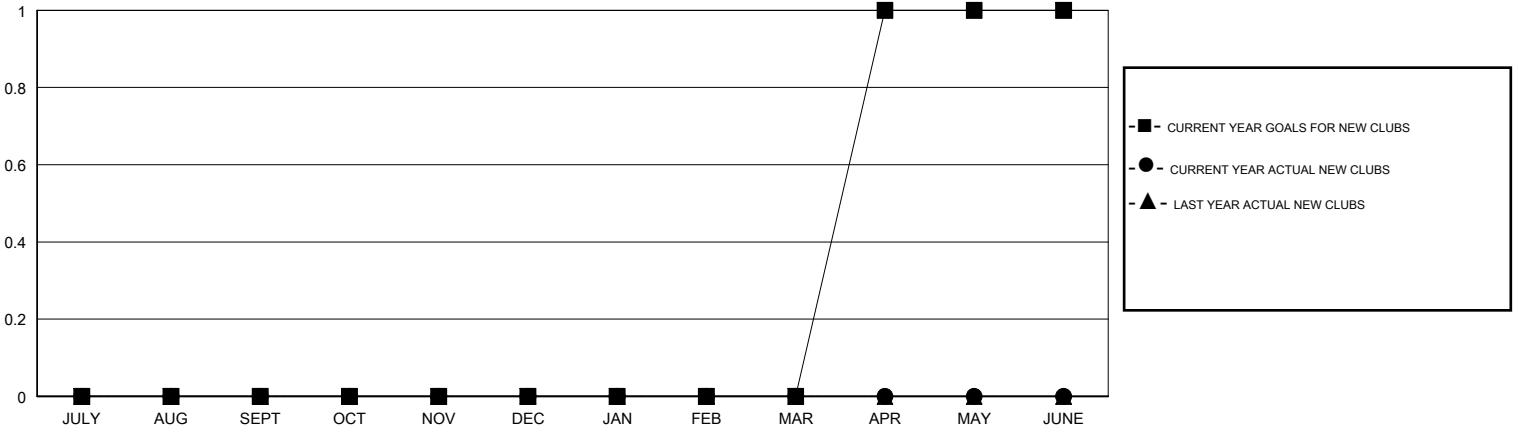
LOCATION INDIANA

GMT CA

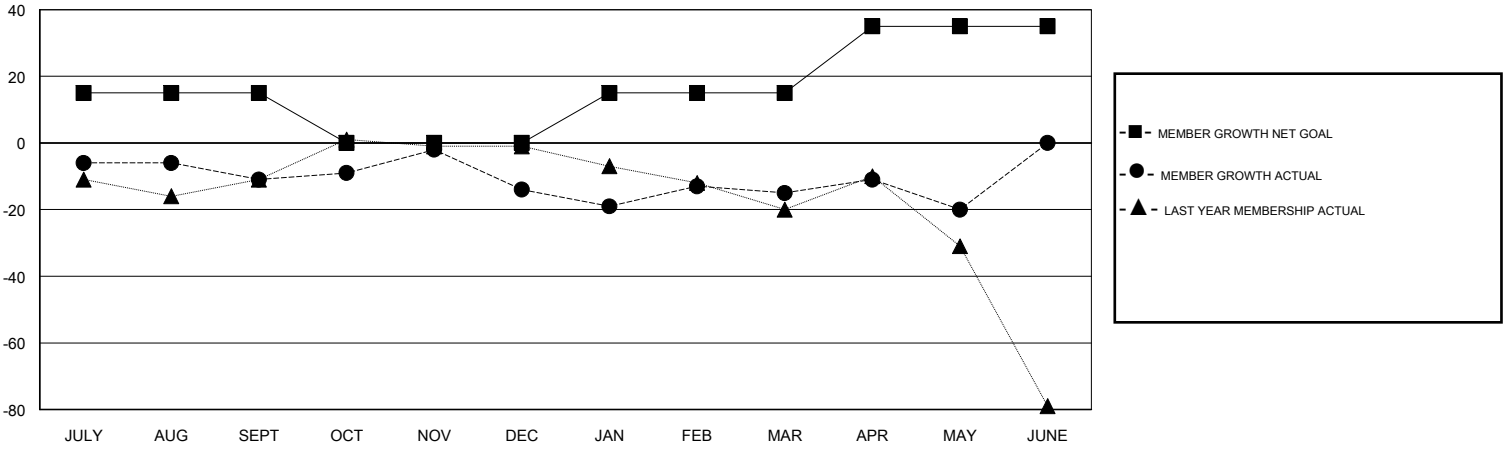
Clubs			
RESULTS FOR 2017-2018			
QUARTER	NEW CLUB GOAL	NEW CLUBS	DROPPED CLUBS
JULY/AUG/SEPT	0	0	0
OCT/NOV/DEC	0	0	0
JAN/FEB/MAR	0	0	0
APR/MAY/JUNE	1	0	0

Members			
RESULTS FOR 2017-2018			
QUARTER	MEMBER GROWTH NET GOAL	MEMBER GROWTH ACTUAL	DROPPED MEMBERS ACTUAL (including transfers)
JULY/AUG/SEPT	15	39	43
OCT/NOV/DEC	-15	42	41
JAN/FEB/MAR	15	30	25
APR/MAY/JUNE	20	20	24

GOALS AND ACTUAL NEW CLUBS CUMULATIVE



GOALS AND ACTUAL MEMBERS CUMULATIVE



DROPPED CLUBS: 0

35 CLUBS OF 50 ADDED 1 OR MORE NEW MEMBERS

GENDER DISTRIBUTION	
MALE	871 (67.73%)
FEMALE	415 (32.27%)
Women Percentage Fiscal Year Goal: 35%	

DROPPED MEMBERS	
DECEASED	22
CLUB CANCELLED	0
OTHER	111
TOTAL	133

[CLICK HERE FOR CUMULATIVE MEMBERSHIP DATA](#)

TOTAL FAMILY UNIT MEMBERS	306
FAMILY MEMBERS PAYING HALF DUES	158